

CHANGJIA COMPANY





About Us



Main Business



R&D

A red triangle pointing upwards, containing the white text '01'.

01

About Us

About Us

Main products: hydraulic orbital motors, hydraulic steering units, gear pumps, piston pumps, hydraulic valves, hydraulic cylinder, etc.

Application: widely used on agricultural machinery, construction machinery, etc.

Market: Europe, America, Turkey, Brazil and others.

A red triangle pointing upwards, containing the white text '02'.

02

Main Business

Hydraulic Motors & Steering Units

Founded in 1985;

Main business: hydraulic orbital motor like OMP OMR OMS OMM OMH OMT OMV Eaton 2K, etc.; steering unit like OSPC OSPB HKUS etc.

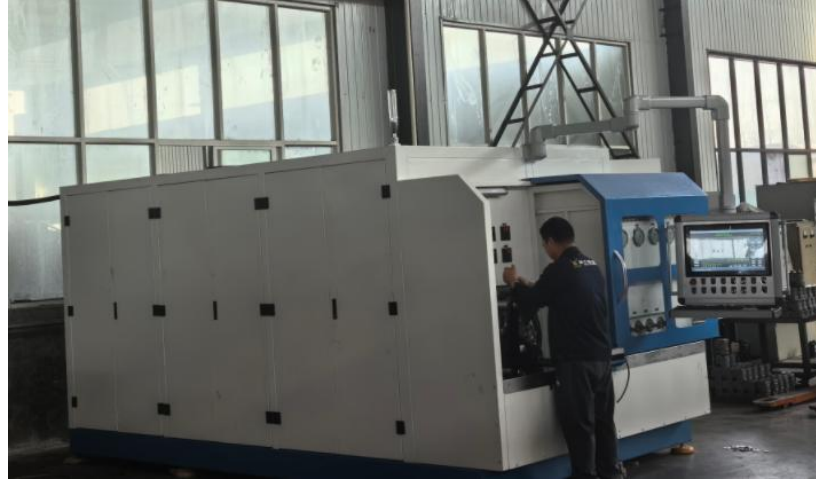
Application: Construction Machinery, tractor, harvester, forklift etc.



Products



Equipments



Gear Pumps

Floor Area: 350,000 m²

Workshop Area: 230,000 m²

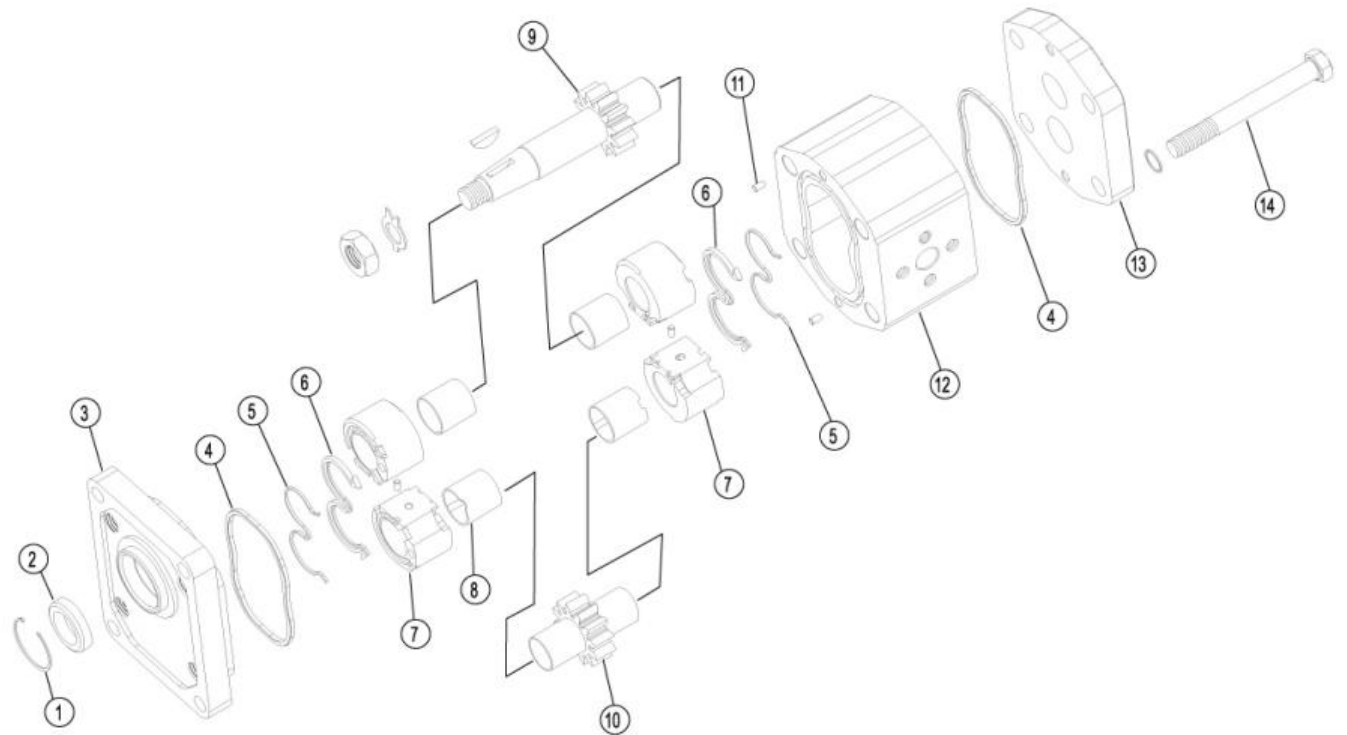
Fixed Asset: USD 240 Million **Employees:** 3400

Sales in 2022: 600 thousand pcs of Gear Pumps

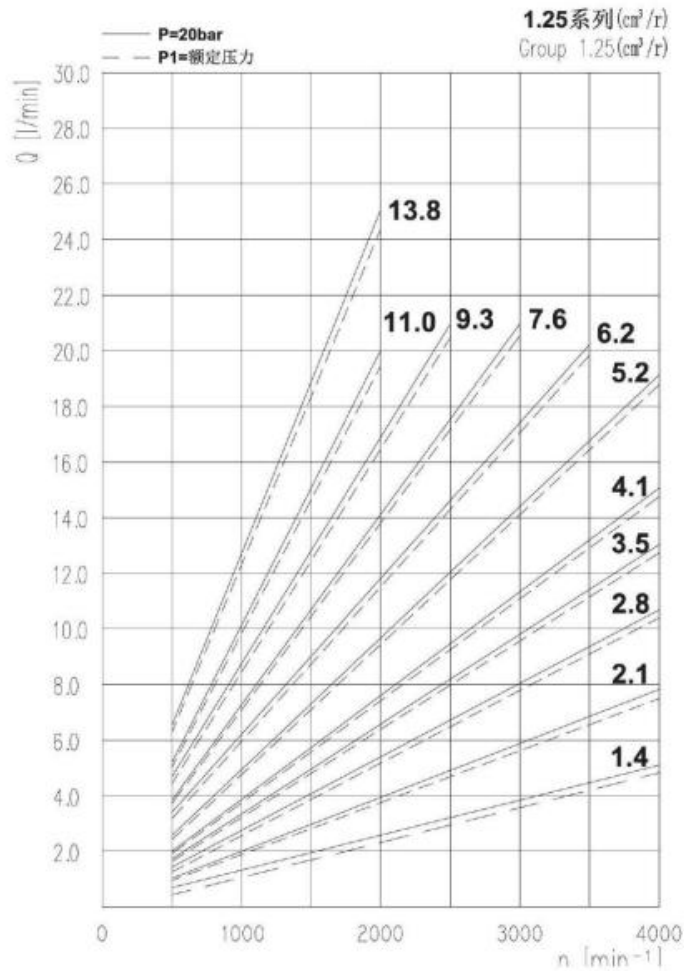
Application: Widly use on agricultural machinery like MF, FIAT, DEUTZ, FORD, etc.



Gear Pumps



Gear Pumps



排量 Displacement	最大压力 Max pressure			最高转速 Max. speed	最低转速 Min. speed	重量 Weight	尺寸 Dimensions		油口代码 Oil port code	进油口 INLET			出油口 OUTLET		
	P1	P2	P3				M	L		B	D	H	b	d	h
(cm ³ /rev)	bar	bar	bar	(r/min)	(r/min)	Kg	mm	mm		mm	mm		mm	mm	
1.4	250	270	290	6000	800	1.80	80.5	40	E0	30	13	M6	30	13	M6
2.1	250	270	290	6000	800	1.835	82.5	41	E0	30	13	M6	30	13	M6
2.8	250	270	290	5000	800	1.87	84.5	42	E0	30	13	M6	30	13	M6
3.5	250	270	290	5000	800	1.905	86.5	43	E0	30	13	M6	30	13	M6
4.1	250	270	290	4000	800	1.94	88.5	44	E0	30	13	M6	30	13	M6
5.2	230	245	260	4000	800	2.02	91.5	45.5	E0	30	13	M6	30	13	M6
6.2	230	245	260	3800	800	2.1	94.5	47	E0	30	13	M6	30	13	M6
7.6	200	215	230	3200	600	2.17	98.5	49	E0	30	13	M6	30	13	M6
9.3	180	195	210	2600	600	2.25	103.5	51.5	E0	30	13	M6	30	13	M6
11.0	170	185	200	2200	600	2.345	108.5	54	E0	30	13	M6	30	13	M6
13.8	150	165	180	1800	600	2.485	116.5	58	E0	30	13	M6	30	13	M6

Piston Pumps

Factory established in 1980.

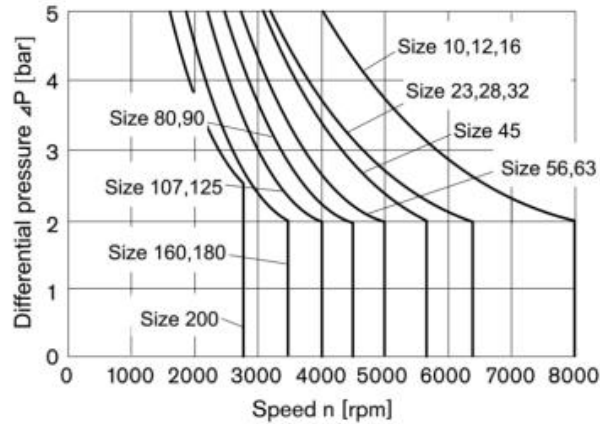
Main products: A2FM,A2FE,A2FO, A6V, A7V, A8V, A4VSO, A11V(L)O, A10V(S)O, etc.

Application: Construction Machinery,Agricultural Machinery,Metallurgical Equipment, Machine Tools, etc.



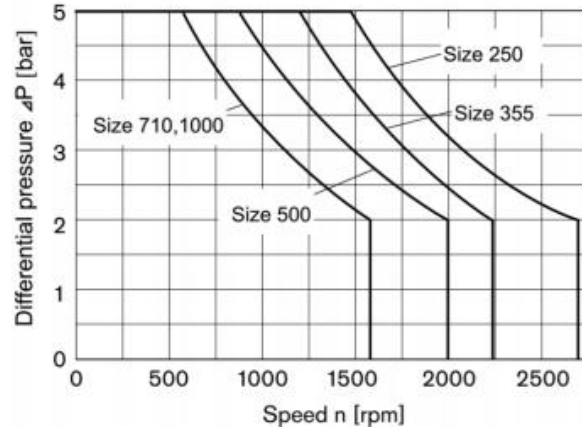
Piston Pumps

□ Sizes 10 to 200



Technical Data	A2FM		5	10	12	16	23	28	32	45	56	63	80
Displacement	V_g	cm ³	4.93	10.3	12	16	22.9	28.1	32	45.6	56.1	63	80.4
Speed ¹⁾	maximum	n_{nom}	rpm	10000	8000	8000	8000	6300	6300	6300	5600	5000	4500
		$n_{max}^{2)}$	rpm	11000	8800	8800	8800	6900	6900	6900	6200	5500	5000
Input flow ³⁾	at n_{nom} and V_g	q_v	l/min	49	82	96	128	144	177	202	255	281	362
Torque ⁴⁾	ΔP=350 bar	T	Nm	24.7 ⁵⁾	57	67	89	128	157	178	254	313	448
	at V_g and ΔP=400 bar	T	Nm	-	66	76	102	146	179	204	290	357	512
Case volume	V	l	0.12	0.17	0.17	0.17	0.20	0.20	0.20	0.33	0.45	0.45	0.55
Weight	approx	m	Kg	2.5	5.4	5.4	5.4	9.5	9.5	9.5	13.5	18	23

□ Sizes 250 to 500



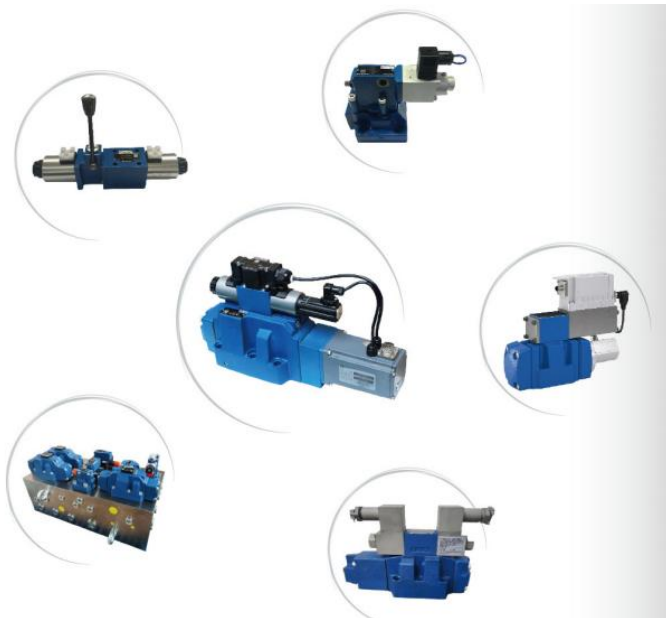
Technical Data	A2FM		90	107	125	160	180	200	250	355	500		
Displacement	V_g	cm ³	90	106.7	125	160.4	180	200	250	355	500		
Speed ¹⁾	maximum	n_{nom}	rpm	4500	4000	4000	3600	3600	2750	2700	2240	2000	
		$n_{max}^{2)}$	rpm	5000	4400	4400	4000	4000	3000	-	-	-	
Input flow ³⁾	at n_{nom} and V_g	q_v	l/min	405	427	500	577	648	550	675	795	1000	
Torque ⁴⁾	ΔP=350 bar	T	Nm	501	594	696	893	1003	1114	1393	1978	2785	
	at V_g and ΔP=400 bar	T	Nm	573	679	796	1021	1146	1273	-	-	-	
Case volume	V	l	0.55	0.8	0.8	1.1	1.1	2.7	2.5	3.5	4.2		
Weight	approx	m	Kg	23	32	32	45	45	66	73	110	155	

Hydraulic Valves

Factory established in 1980.

Main products: Proportional servo valves, directional valves, pressure valves, flow valves, cartridge valves, hydraulic integrated valves.

Application: Construction Machinery, Agricultural Machinery, Metallurgical Equipment, Machine Tools, etc.

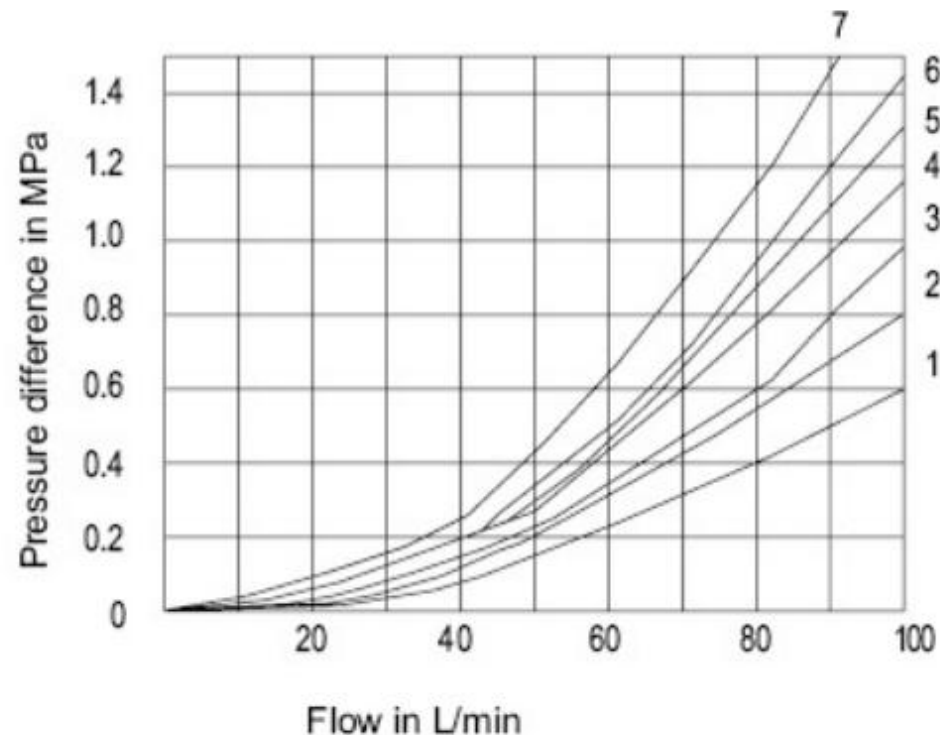


Hydraulic Valves

Characteristic curves (measured at $v = 41 \text{ mm}^2/\text{s}$ and $t = 50^\circ\text{C}$)

7 Symbol "R" in switched position A → B

8 Symbols "G" and "T" in mid position P → T



Symbols	Direction of flow			
	P-A	P-B	A-T	B-T
A, B	2	2	-	-
C, D, Y, J	2	2	3	3
E, Q, V	2	2	4	4
F	2	3	3	5
G	3	3	4	6
H	1	1	4	5
L, U	2	2	3	5
M	1	1	5	1
P	3	2	5	3
R	2	4	3	-
T	3	5	5	6
W	2	2	5	5

Hydraulic Cylinders

Founded in 1990.

It is a professional hydraulic parts manufacturer specializing in the development, production and sales of hydraulic cylinders.

Application: metallurgical equipment, engineering machinery, etc.



A red triangle pointing upwards, containing the white text '03'.

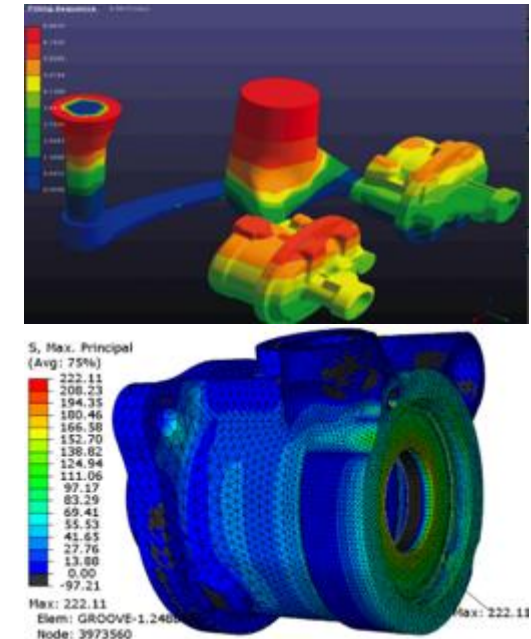
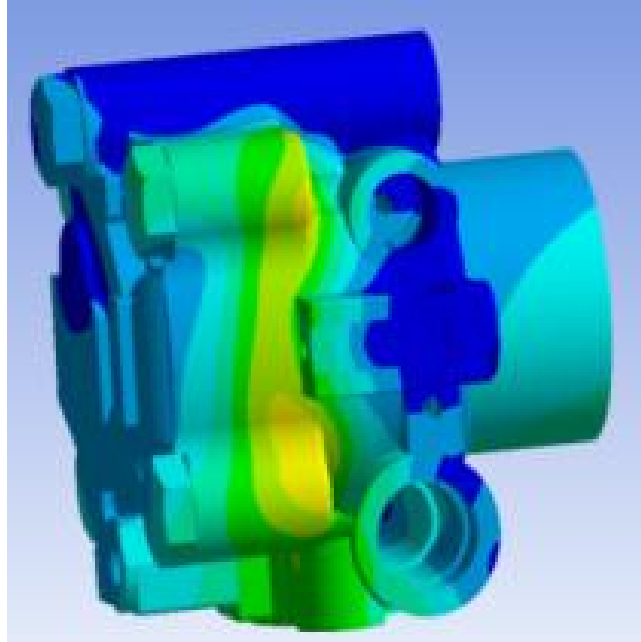
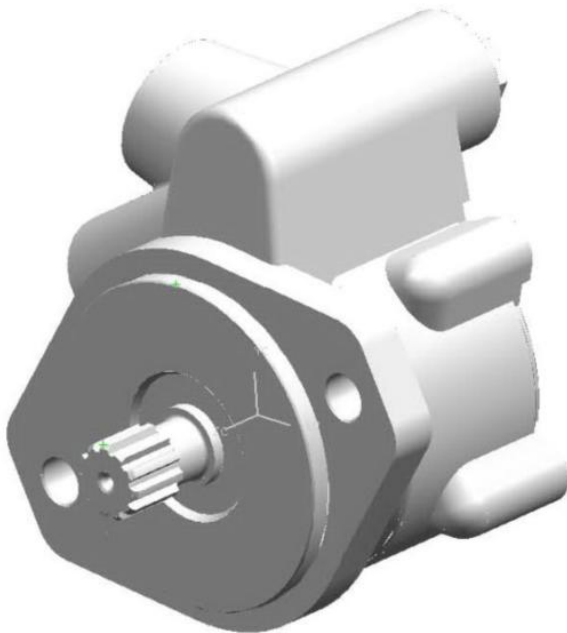
03

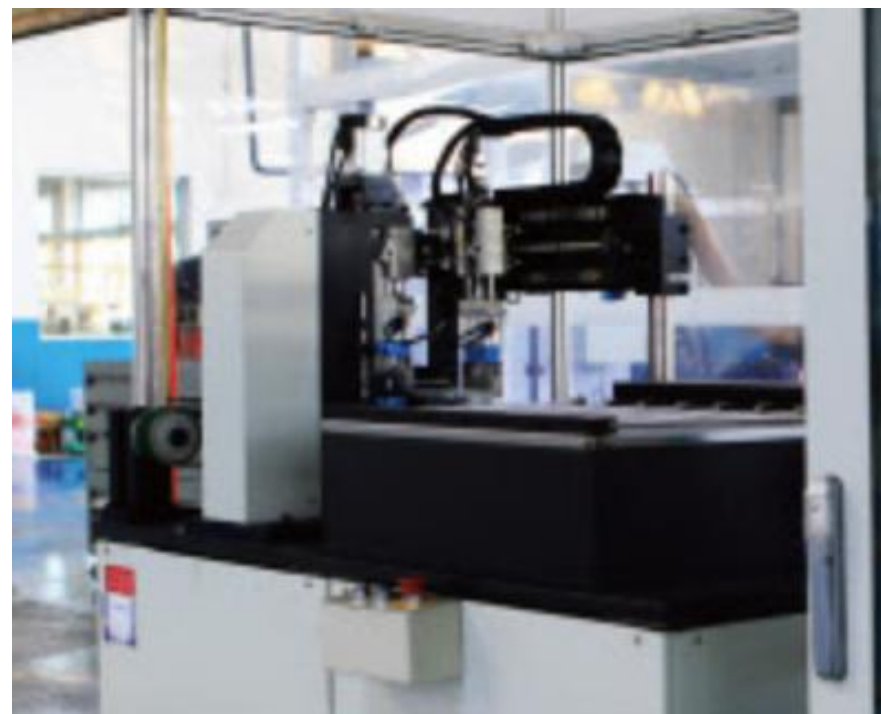
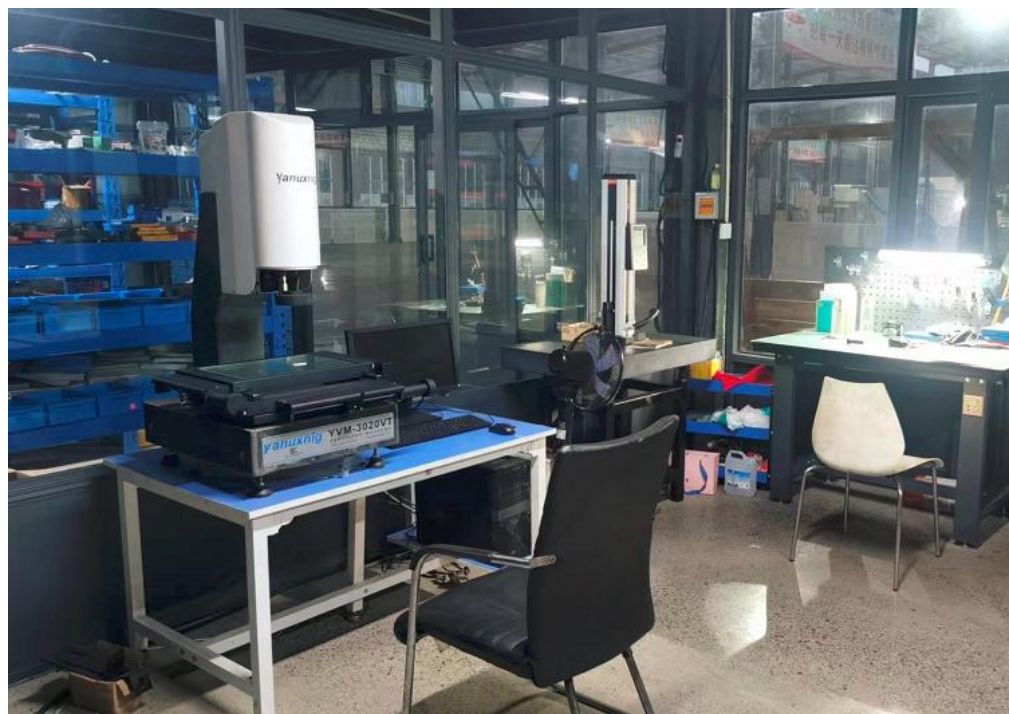
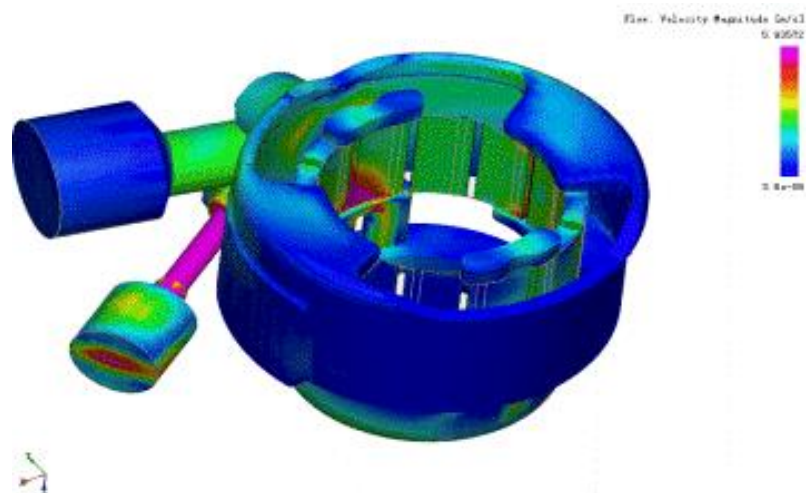
R&D

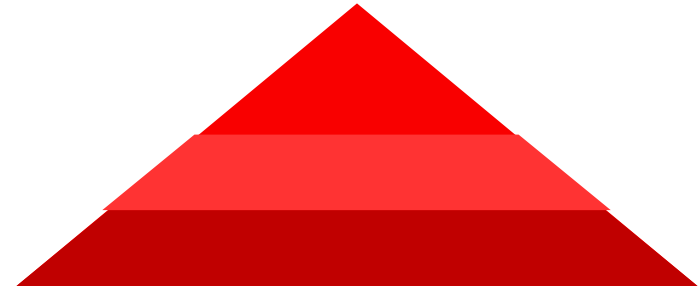
R & D

Customization: We have advanced digital production equipment, can customize production according to the product drawings, product parameters and other data provided by customers.

R&D: Research and Development: we have many experienced engineers, can design the plan and drawings, according to the product requirements provided by customers.







THANK YOU

